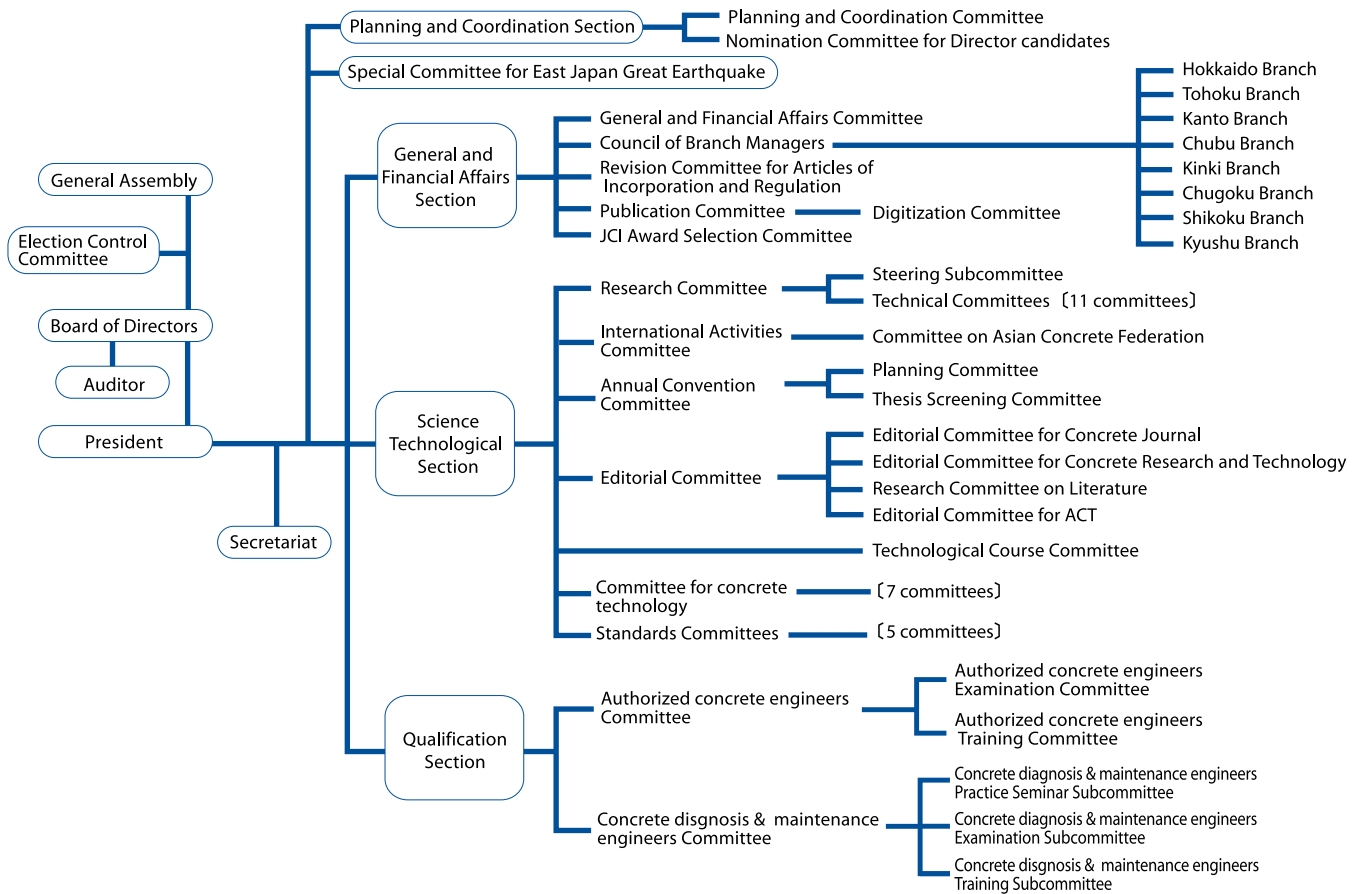


Japan Concrete Institute (JCI) Organizational Chart [2011]



Officers (FY2011)

| Position | Name | Company · Affiliation |
|---------------------------|---------------------|---|
| President | Yoshihiro MASUDA | Utsunomiya University |
| | Kyuichi MARUYAMA | Nagaoka University of Technology |
| Vice-President | Shigehiro KOBAYASHI | Sumitomo Osaka Cement Co.,Ltd. |
| | Hirozo MIHASHI | Graduate School of Tohoku Institute of Technology |
| Executive Director | Hideki IGARASHI | Japan Concrete Institute |
| | Hiroyuki IKEDA | Central Nippon Expressway Co.,Ltd. |
| | Nobuyuki IZUMI | Graduate School of Chiba University |
| | Kenichi ICHISE | Obayashi Corporation |
| | Hidetaka UMEHARA | Nagoya Institute of Technology |
| | Takaaki OOKUBO | Graduate School of Hiroshima University |
| | Nobuaki OTSUKI | Graduate School of Tokyo Institute of Technology |
| | Takahisa OKAMOTO | Graduate School of Ritsumeikan University |
| | Yoji OGAWA | Nippon Hume Corporation |
| | Daisuke KATO | Niigata University |
| | Toshimi KABEYASAWA | Earthquake Research Institute,The University of Tokyo |
| | Morio KURITA | Shimizu Corporation |
| | Yasuo KOGA | Japan Cement Association |
| | Koji SAKAI | Kagawa University |
| | Shoji SHIROKUNI | National Federation of Ready-Mixed Concrete Industrial Associations |
| | Director | Toru TAKAHASHI |
| Yoshihiro TAKAHASHI | | Hokkai-Gakuen University |
| Koji TAKEWAKA | | Graduate School of Kagoshima University |
| Yoichi TSUKINAGA | | Graduate School of Hachinohe Institute of Technology |
| Kazutoshi TODA | | Flowric Co., Ltd. |
| Tomomi TOMITA | | Urban Renaissance Agency |
| Junichiro NIWA | | Graduate School of Tokyo Institute of Technology |
| Shinichiro NOZAWA | | East Japan Railway Company |
| Hiromi FUJIWARA | | Graduate School of Utsunomiya University |
| Shingo MIYAZAWA | | Ashikaga Institute of Technology |
| Ayaho MIYAMOTO | | Graduate School of Yamaguchi University |
| Haruo YOSHIDA | | National Federation of Ready-Mixed Concrete Industrial Associations |
| Auditor | Keitetsu ROKUGO | Gifu University |
| | Kouichi SATO | Kumagai Gumi Co.,Ltd. |
| | Tomoyasu SATO | Japan Cement Association |

Joining JCI

Categories of Members and Membership Fees

The categories of members are Regular Member (individual member) and Class 1 Organization Member and Class 2 Organization Member.

Regular Member

A person of learning and experience regarding concrete or a person engaged in work closed related to concrete technology

- ◆ Joining fee: 1,000 yen
- ◆ Annual membership fee: 12,000 yen

Class 1 Organization Member

A public agency or academic society dealing with concrete

- ◆ Annual membership fee: 50,000 yen or higher

Class 2 Organization Member

An organization or company supporting the objectives and activities of JCI

- ◆ Annual membership fee:
 - Level 1: 200,000 yen or higher
 - Level 2: 150,000 yen or higher
 - Level 3: 100,000 yen or higher
 - Level 4: 50,000 yen or higher