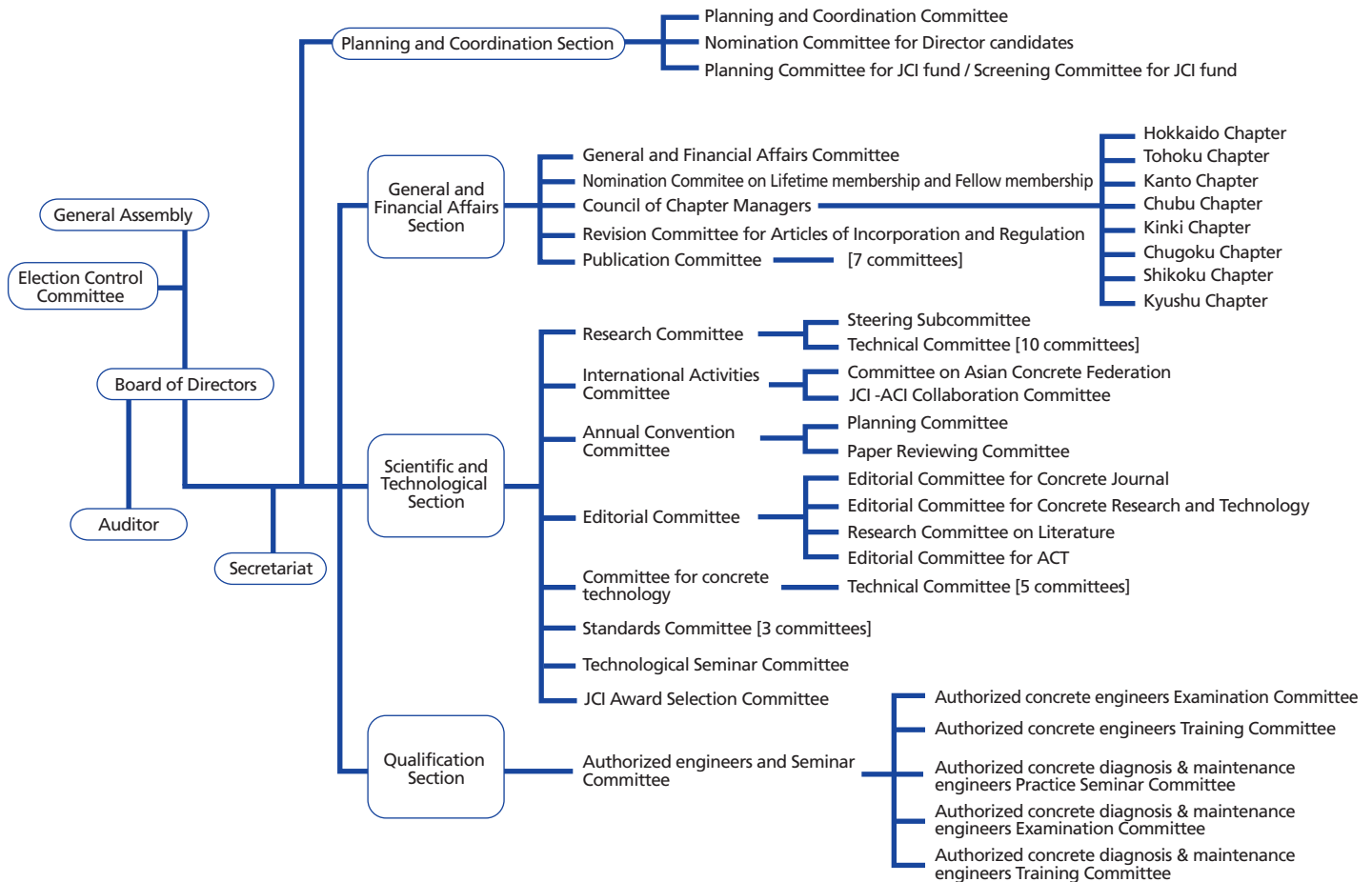


# Japan Concrete Institute (JCI) Organizational Chart [FY2017]



## Officers [FY2017]

Position	Name	Company · Affiliation
<b>President</b>	Kyuichi MARUYAMA	Nagaoka University of Technology
<b>Vice-President</b>	Mitsutaka HAYAKAWA	
	Keishiro IRIYA	Obayashi Corporation
	Hidetaka UMEHARA	Nagoya Institute of Technology
	Shigemi YAMAMOTO	Sumitomo Osaka Cement Co., Ltd.
<b>Executive Director</b>	Toru KAWAI	Japan Concrete Institute
<b>Director</b>	Hirofumi BANDO	Sika Ltd.
	Yukio HAMA	Muroran Institute of Technology
	Shigemitsu HATANAKA	Mie University
	Eiichi INAI	Yamaguchi University
	Masami ISHIKAWA	Tohoku Gakuin University
	Hiroaki ISHIZUKA	UEDA Corporation
	Yoshiro KAI	Kochi University of Technology
	Takahiro KANNO	East Japan Railway Company
	Tetsuro KASAI	Tokai University
	Masaru KATAYAMA	Electric Power Development Co.,Ltd.
	Kenji KAWAI	Hiroshima University
	Toshiharu KISHI	The University of Tokyo
	Ichizo KISHIMOTO	Kindai University
	Tomoyuki KOYAMA	Kyushu University
	Tsuyoshi MARUYA	Taisei Corporation
	Masaru NAGAYAMA	General Building Research Corporation of Japan
	Minehiro NISHIYAMA	Kyoto University
	Tatsuo OGATA	Nippon Expressway Research Institute Co., Ltd
	Shinichi SHIOYA	Kagoshima University
	Shoji SHIROKUNI	Hiroshima Taiheiyo Namacon Co., Ltd.
Kohji TERANISHI	Meijo University	
Yuichi UCHIDA	Gifu University	
<b>Auditor</b>	Yoshihiro OHTA	Takenaka Corporation
	Hisanobu TANAKA	Mitsubishi Materials Corporation

## Joining JCI

### Categories of Members and Membership Fees

The categories of members are Regular Member, Student Member, Class 1 Organization Member and Class 2 Organization Member.

#### Regular Member

A person of learning and experience regarding concrete or a person engaged in work closely related to concrete technology

- ◆ Joining fee: 1,000 yen
- ◆ Annual membership fee: 12,000 yen

#### Student Member

A person under enrollment in a university (including a graduate school, a junior college), a technical college, and a high school

- ◆ Joining fee: 1,000 yen
- ◆ Annual membership fee: 6,000 yen

#### Class 1 Organization Member

A public agency or academic society dealing with concrete

- ◆ Annual membership fee: 50,000 yen or higher

#### Class 2 Organization Member

An organization or company supporting the objectives and activities of JCI

- ◆ Annual membership fee:
  - Level 1: 200,000 yen or higher
  - Level 2: 150,000 yen or higher
  - Level 3: 100,000 yen or higher
  - Level 4: 50,000 yen or higher